

At a Glance
Registration
WINSIDE-Winside Public Schools will begin the 1989-90 school year on Monday, Aug. 28 at 8:30 a.m. Registration for new students to the district will be on Wednesday, Aug. 23 from 9 a.m. to noon. Ninth through 12th grade students wishing to change their schedules from the spring pre-registration also need to be in attendance.

Swim notes
WAYNE-The Wayne Swimming Pool will close on Sunday, Aug. 27. Anyone who took swimming lessons and passed this summer needs to pick up Red Cross certificates before the pool closes.

Walk safely
WAYNE-The Wayne Police Department will conduct its 22 annual Pedestrian Safety School for kindergarten children, under the direction of Patrolman Robert McLean.

The school will last approximately one hour and will include the proper method of crossing streets, crossing streets with stop signs, crossing streets with traffic signals, and similar information that can be important for youngsters to know.

There will also be a short film which will illustrate the above situations. Refreshments will be served following the instructions.

The program will take place on the third floor of the City Hall building at 306 Pearl Street.

The schedule is as follows: Aug. 22, 10 a.m. for last names beginning with the letter A through G; Aug. 22, 1:30 p.m. for last names beginning with the letter H through Z.

Bike safely
WAYNE-A bicycle safety class will take place on Monday, Aug. 21 from 9 to 11 a.m. and 1:30 to 3:30 p.m. at the Wayne City Hall building. Participants will learn the fundamentals of safe bike riding.

The police department encourages parents to have their children attend this bicycle safety class as the basics of safe bike riding will be stressed.

Each attendant should bring his or her own bike in good working condition. Bikes are required to be licensed prior to the date of this class.

There is no charge for attending. The program will be under the direction of Patrolman Robert McLean.

Children who are registered in second and third grade for the 1989-90 school year are eligible to attend.

All children will attend both the morning and afternoon session.

Lunch prices
WAYNE-School lunch prices at Wayne-Carroll School will remain as follows: \$5.75 for high school and middle school weekly and \$1.20 for the daily rate; \$5.25 for elementary weekly and \$1.10 for elementary daily; and \$1.45 daily for adults and \$7.25 for adults weekly.

Viewing site
WAYNE-Business people across Nebraska will be able to share marketing ideas during a free videoconference called "Networking for Success" offered statewide Aug. 22 from 8 p.m. to 10 p.m.

This videoconference will give people in business across Nebraska a chance to meet others like themselves and share information on advertising and marketing.

One panel will discuss "Network to Improve Marketing" and a second panel discussion will take place on "Network to Improve Advertising."

Local discussion with participants will occur after each panel at the viewing sites.

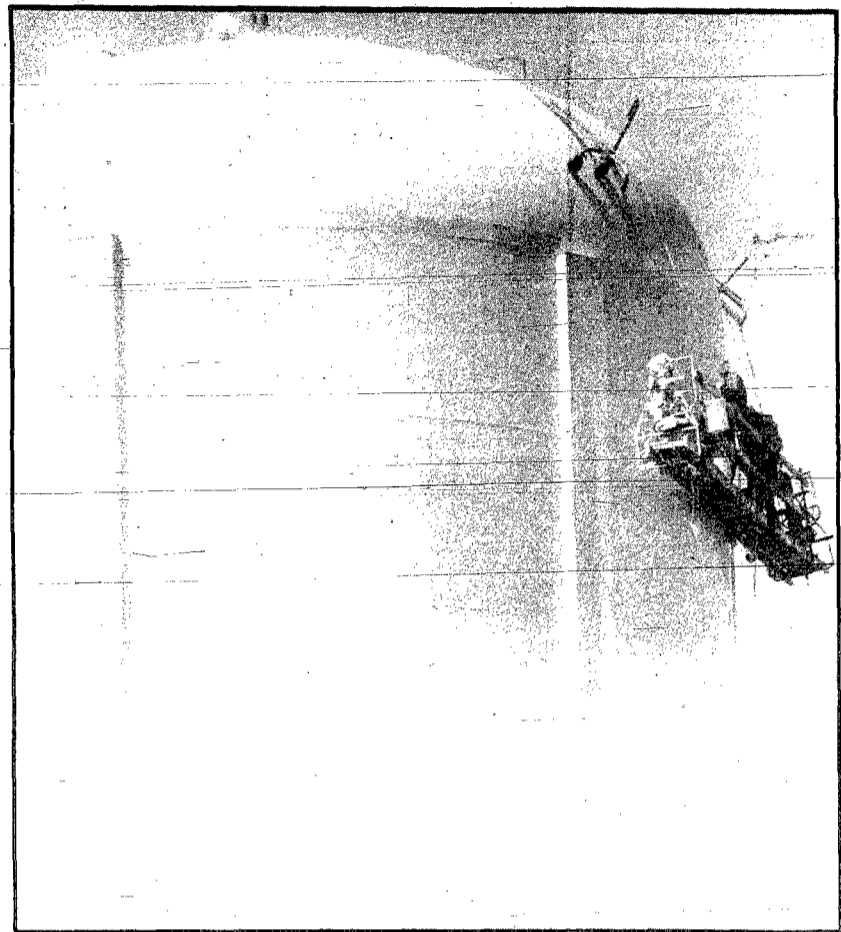
One of the viewing sites will be in Concord at the Northeast Research and Extension Center.



Jeremy Lutt
Wayne
Extended Weather Forecast:
Friday through Sunday; chance of showers or thunder storms, each day; highs, 80s; lows, upper-50s to lower-60s.

THE WAYNE HERALD

WAYNE, NE 68787 THURSDAY, AUGUST 17, 1989 - 110TH YEAR - NO. 87 THIS ISSUE - 2 SECTIONS, 16 PAGES NEWSSTAND 45c



Photography: Chuck Hackenmiller

Final coat
THE STANDPIPE ON the west edge of Wayne got a fresh coat of paint last week. Contractors are using high pressure sprayers to complete the work. "Wayne America" is not being painted on the standpipe.

County lessens tax askings from previous fiscal year

By Chuck Hackenmiller
Managing editor

Just as last year, total tax askings will dip down from the previous year according to a proposed Wayne County 1989-90 fiscal year budget being considered by the county commissioners.

A public hearing on the proposed budget has been set for

Monday, Aug. 21, at 9 a.m. at the Wayne County Courthouse.

Total tax askings proposed reflects a 11 percent decrease over the previous fiscal year. The total property tax requirement for 1989-90 is presently set at \$974,308.25, a decrease from the \$1,086,248 established the previous fiscal year.

General fund tax askings, as is total tax askings, will also

experience a decrease of approximately 46 percent — from the \$463,433 approved in 1988-89 by the county commissioners to \$318,434 proposed for this fiscal year.

These tax askings are down despite an anticipated increase in spending requirements for 1989-90 in both the general fund and

See TAXES, page 8A

Gas company will pay taxes

Peoples Natural Gas will continue to pay property taxes in all its Nebraska communities.

The Nebraska Supreme Court ruled earlier this month that Northern Natural Gas, which supplies natural gas to distribution companies like Peoples, cannot be required to pay property taxes in the state. The decision, which relates to Nebraska's "fair and

equal treatment" provisions, opened the way for other privately owned utilities to file for exemption from property taxes.

However, Peoples will not seek an exemption. "We're acting in the best interest of our communities," said Bill Rickabaugh, director of taxes for Peoples, a division of UtiliCorp United.

"Schools would be the big loser

since about 60 percent of Peoples' property taxes go to education," said Jim Markham, local manager from Wayne. "We're committed to the future of our schools and of Wayne, Wakefield, Bancroft and Emerson."

"Peoples will not withdraw its support. We will continue to contribute to the economic well-being of this community," said Markham.

Requests tax asking increase School board approves 1989-90 fiscal budget

By Chuck Hackenmiller
Managing editor

The Wayne-Carroll Public School District will have an anticipated 6.9 percent increase in general fund property tax askings for fiscal 1989-90 following board of education approval of the annual budget Monday evening.

Property taxes will rise from the 1988-89 fiscal budget figure of \$1,617,630 to \$1,729,470 in the 1989-90 fiscal year.

Superintendent Francis Haun specified two main reasons for the proposed budget property tax increase.

"Elementary enrollment continues to increase resulting in an additional section of sixth grade," said Haun.

"And also there has been a continued effort on the part of the board of education and the Wayne Education Association to keep teacher salaries comparable to those paid by an array of schools established by the Court of Industrial Relations in 1988," he said.

Starting salaries for teachers for 1989-90 will increase from \$15,600 in 1988 to \$16,325 in 1989.

The board has also used the array to establish salary comparability for administrators and other certified staff members. The board had approved increasing the salaries for the superintendent and three principals by six percent for the 1989-90 school year.

The amount of budgeted expenditures in 1989-90 will reach approximately \$3.35 million compared to last year's total budget of expenditures of \$3 million.

IN HIS BUDGET message, Haun pointed out the following:

— Wayne kindergarten in 1989-90 will continue with three sections. The sixth grade will need an additional section to reflect the increased enrollment coming in from the fifth grade.

— Major goals to buildings in the school district have been achieved. The energy loan and grant project was completed which should have an energy savings and result in a savings payback to the school district. The loan is repayable in the amount of \$6,000 a year over 14 years.

Projects included insulating and re-roofing the high school; new vestibule on the center north of the high school; insulation of all doors and windows; new energy-saving lights in the gymnasium; and new switching capabilities of the light system in the lecture hall.

— Asbestos removal in the high school band room has been completed. The costs, \$32,000, was

taken from the building fund of the school district. Also, building barriers for the handicapped have, for the most part, been removed. Rest room partitions need to be widened and some railings need to be installed.

— Wayne-Carroll School District is growing. Nearly 300 acres of land was transferred to the Wayne district in 1988-89.

— Last fiscal year's tax levy for general fund was 1.45. When ranked with the total population of K-12 schools (278) Wayne's levy ranked 251, with one the highest and 278 the lowest.

Haun said that even though there will be a budget increase for the Wayne Public School District in 1989-90, the state tax levy ranking will probably not change significantly. Other school districts of similar size must also rely on the local property tax for revenue and they have similar or larger fixed cost increases.

— THE BONUS for teachers passed by the 1989 legislature will not affect the budget in terms of tax dollars. The money for the bonus goes into the budget as an increase, but it is also considered as a transfer of funds from the state to the local, and then from the local back to the teachers.

— The board placed \$1,000 in the budget for the purpose of beginning a study of technological education at the middle school.

— The board authorized the creation of a new pupil guidance position for the middle and elementary schools.

— Driver education during the school year has been eliminated and students will need to enroll in a summer program for 1989.

— In the future, a tuck-pointing of bricks at the middle school needs to be undertaken (\$50,000 estimated cost) and major repair is needed on the surface of the track.

—The school district has been furnishing full-time employees with health insurance by paying the full premium for either family or single coverage. Costs have escalated in excess of 60 percent the past two years. "The board of education will have to continue a study of the options which might be available to them in subsequent years to offset this large increase in premium costs," said Haun.

HAUN SAID the school district continues to operate on a sound fiscal basis. He said comprehensive programs are offered to special needs students at all grade levels.

"The school district is relatively

See BUDGET, page 8A

Count estimated on WSC visitors

A recent tabulation has determined that approximately 30,000 elementary and high school students visited Wayne State College for various activities during the 1988-89 academic year.

"The general public is often unaware of the important role the college plays in the life of its service region," says Dr. Donald Mash, president of Wayne State College.

"Higher education is our principle product, but our public service role goes well beyond offering courses. We use our facilities and resources to offer dozens of year-round activities which enrich northeast Nebraska. Enhancing the quality of life in our communities and in the schools is a vital part of our public service mission."

The report determined that groups visiting campus ranged from 35 students who participated in a spelling bee on March 10 to more than 5,000 students who watched the Children's Theatre production "Wizard of Oz" in April.

Other activities include: Planetarium (4,000); Business Competition Day (650); Junior Academy of Science (500); choral festival (500); high school holiday basketball tournament (500); math contest (400); Music Camp (350); and Industrial Arts Competition Day (260).

ACTIVITIES DREW students from more than 100 communities in Nebraska and western Iowa, with the heaviest participation from the Northeast region of Nebraska.

March and April were the busiest months on campus for outside activities. Spring sporting events, academic competitions, and the Children's Theatre were responsible for much of this activity.

"We'll continue to encourage young people and their families to participate in the life of our campus and we're doing more to take our activities and services off the campus and into the communities of our service region," Mash said.

"We are working hard to become more helpful in northeast Nebraska. We want to be of service to every community in our service region."

Mash cited arts activities, especially those coordinated by the Center for Cultural Outreach, extended campus classes, and community development assistance as examples of enhanced outreach programs planned for the upcoming year.



Dixon County Pioneer Farm Families
RECIPIENTS OF THIS YEAR'S Ak-Sar-Ben Pioneer Farm Family Awards in Dixon County were, pictured from left, Mr. and Mrs. Thaine Woodward of Concord, Mr. and Mrs. Archie Schultz of Allen, Mr. and Mrs. Reuben Meyer of Wayne, and Alma Weiershauser of Wayne. They were presented their awards Sunday evening during vesper services at the Dixon County Fairgrounds in Concord. The award is presented to owners of farms that have been in the same family for 100 years or more.

Wayne Tennis Open draws 151 total entries

By Kevin Peterson
Sports Editor

The Annual Wayne Tennis Open was held this past weekend and a total of 151 entries took part. Like last year's Wayne Open, a bit of

foreign flavor made its emergence as one of the highlights.

Julien Rossignol, an exchange student from Grenoble, France, took part and the 14-year-old made the most of it. Rossignol played two divisions above his age

in the 18-year-old division and he literally breezed through the tournament unscathed. In fact, none of Julien's matches went more than two sets.

Rossignol also participated in the Open but was defeated in the first round by Troy Cunningham, who now resides in Lincoln. That brings to light the other major highlight of the tournament.

Cunningham made it to the open singles final against Sioux City's Doug Stanek. Now for a bit of irony: At one time Cunningham was ranked as one of the top 100 players in the United States but burnout got the best of him and he gave up the sport of tennis—that is until about two weeks ago.

Cunningham decided to get back into the sport and took part in the clay court tournament in Sioux City a week ago before traveling to Wayne to play in the Wayne Open.

For Doug Stanek however, he began playing the sport of tennis approximately the same time that

Cunningham was getting out of the sport. Stanek outlasted Cunningham in the finals of the open singles in three sets in a match that saw a lot of great rallies.

With the Wayne Open you're bound to have some Wayne participants. This year's open saw many more participants from Wayne than last year's with 13 local residents taking part.

Barry Dahlkoetter highlighted the local talent by winning the Men's A title. Incidentally, Dahlkoetter has won two consecutive tournaments in as many weeks after winning the Norfolk A title the weekend before.

In an all Wayne final in the women's open singles final, Wayne State Women's basketball coach Liz O'Brien outlasted ReNee Saunders in three sets to claim the highest prize.

Doug Rose and Kevin Peterson (yours truly) were the only other two Wayne residents who made it past the opening rounds and as far as the semi-finals. Rose was de-

feated by eventual singles open champion Doug Stanek. Peterson made it to the semi-finals in both the novice singles and the A doubles with his partner Monte Tilgner, but was defeated at that point. Tilgner, Peterson's double partner, defeated Peterson in the semi-finals of the Novice division.

Other Wayne residents taking part in the tournament included: Ziha Sever, Bob Lohrberg, Dave Sorensen, Chris Mondel, David Enz, Kirk Carmichael, Shaun Powell, and Kurt Saunders.

Wayne County Attorney Bob Enz drew the names for the early entry prizes and those prizes were won by Kirk Carmichael, Cindy Leinen and Shaun Powell. Carmichael won the racket while Leinen won the thermal triple racket bag and Powell won the water jug.

There was only two repeat champions from last year's Wayne Open and they included Liz O'Brien in the Women's Open Singles and Dan Price in the 16-year-old Singles division.

Other highlights of this year's tournament included the doubles play of Jim Johnson of Fremont and Jim Jorgensen of Blair. The two-

some teamed up to capture both the "A" doubles and the Open doubles. It was the first time that feat had ever been accomplished.

The only other person receiving two first place trophies was Kerry Lammers of Omaha. Ms. Lammers claimed top honors in the girls 18-year-old Singles division and the 18-year-old doubles division as she teamed up with Shawnee Tietmeyer of Lincoln.

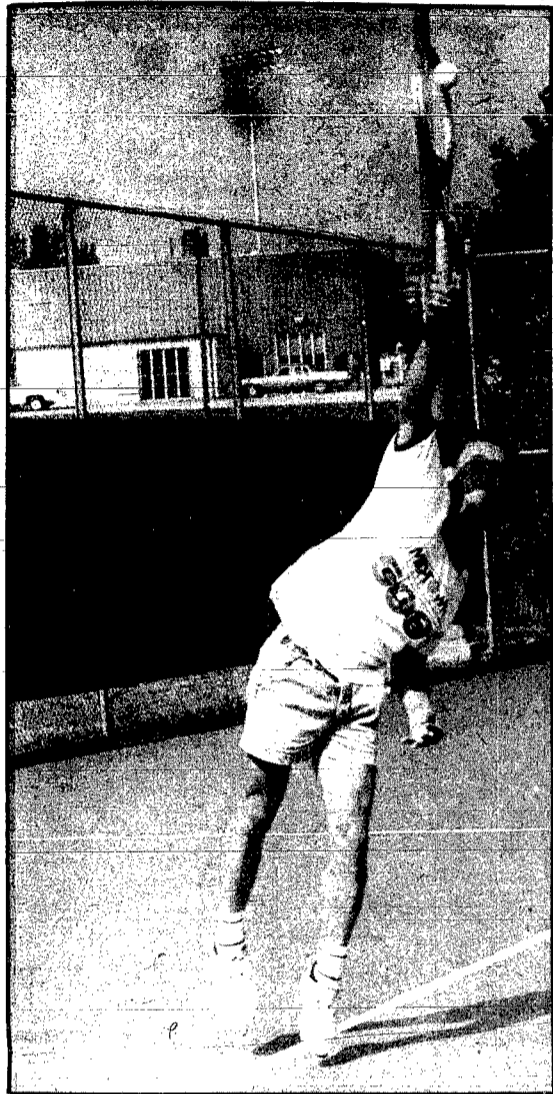
A complete list of the winners follows:

Boys 14 singles: Semis: Andy Allison, Omaha, defeated Brad Cornelison, Sioux City, 6-1, 6-4; Tony Siske, Ralston, defeated John Cornelison, Sioux City, 6-4, 6-1; Finals: Allison defeated Siske, 6-7 (5-7), 6-0, 6-2.

Boys 16 singles: Semis: Bryan Hibma, Sioux City, defeated Chris Vincent, Norfolk, 6-2, 6-2; Dan Price, Norfolk, defeated Eric Stafford, Norfolk, 6-3, 6-1; Finals: Price defeated Hibma 6-1, 1-6, 6-4.

Boys 18 singles: Semis: Julian Rossignol, Grenoble France, defeated Eric Stafford, Norfolk, 6-3, 6-1; Dan Price, Norfolk, 6-3, 6-1; Finals: Price defeated Hibma 6-1, 1-6, 6-4.

See **TENNIS**, page 5A



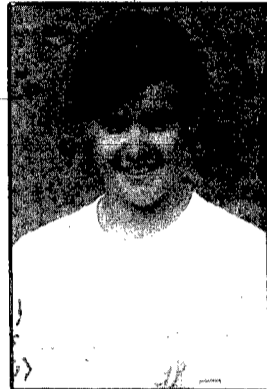
DOUG STANEK puts everything he has into his serve during the finals of the Mens open singles during the Wayne Open.



SIOUX CITY'S Kelly Neustrom eyes his opponent before making a return shot during doubles action of the Wayne Open.



Andy Allison
Boys 14 Champ.



Kerry Lammers
Girls 18 Champ



Julien Rossignol
Boys 18 Champ



Barry Dahlkoetter
Mens A Champ



Jane Koehler
Mixed double Champ
with Kory Kenny



Jim Tiefenbach
Mens 35 Champ



SHAWNEE TIETMEYER of Lincoln and **Kerry Lammers** of Norfolk teamed up to win the doubles competition in the girls 18 and under division.



Tara Svik
Girls 15 Champ



Dan Price
Boys 16 Champ



TOURNAMENT DIRECTOR Tom Roberts presents **Doug Stanek** with the first place trophy after winning the open singles division.



JIM JOHNSON, left from Fremont and **Jim Jorgensen** of Blair teamed up to capture both the "A" doubles competition and the Open doubles competition.



Liz O'Brien
Women's Open Champ



Jim Curry
Mens Novice Champ

Tennis

(continued from page 4A)

defeated Brian Chatham, Norfolk, 6-3, 6-2; Mike King, Norfolk, defeated Chad Werner, Norfolk, 6-0, 6-2; Finals: Rossignol defeated King, 6-2, 6-2.

Boys 18 doubles: Semis; Brian Chatham-Nick Kreikemeler, Norfolk, defeated Jason Wagner-Tim Rhode, South Sioux City, 6-1, 6-1; Mike King-Chris Vincent, Norfolk, defeated Andy Allison-Matt Ferguson, Omaha, 6-3, 6-1; Finals: Chatham-Kreikemeler defeated King-Vincent, 6-3, 6-0.

Girls 15 exhibition singles: Semis; Melissa Forslund, Norfolk, defeated Kelly Briggs, Norfolk, 6-2, 6-1; Tara Svik, Norfolk, defeated Monica Miller, Norfolk, 6-2, 6-3; Finals: Svik defeated Forslund, 6-2, 6-1.

Girls 18 singles: Semis; Shawnee Tietmeyer, Lincoln, defeated Mary Johnson, Norfolk, 6-0, 6-2; Kerry Lammers, Omaha, defeated Kristin Eberhardt, 6-0, 6-0; Finals: Lammers defeated Tietmeyer, 6-0, 6-2.

Girls 18 doubles: Semis; Shawnee Tietmeyer-Kerry Lammers defeated Candance Mosher-Monica Miller, Norfolk, 6-1, 6-0; Kelly Briggs-Kristin Eberhardt, Norfolk, defeated Erin Mayo-Kendra Black, Clearwater, 5-7, 6-1, 6-4; Finals: Tietmeyer-Lammers defeated Briggs-Eberhardt, 6-0, 6-0.

Mens Open Singles: Semis; Doug Stanek, Sioux City, IA defeated Doug Rose, Wayne, 6-1, 6-0; Troy Cunningham, Lincoln, defeated Kory Kenny, Norfolk, 6-2, 6-1; Finals: Stanek defeated Cunningham, 6-4, 4-6, 6-3.

Mens A Singles: Semis; Tim Neustrom, Sioux City, IA defeated Jim Tiefenbach, Sioux City, IA 7-5, 2-4 (Ret); Barry Dahlkoetter, Wayne, defeated Bill Bazyn, Norfolk, 6-4, 6-1; Finals: Dahlkoetter defeated Neustrom, 6-4, 7-6 (7-2).

Novice Singles: Semis; Jim Curry, Norfolk, defeated Doug Rlx, Oakland, 6-1, 6-1; Monte Tilgner, Wayne, defeated Kevin Peterson, Wayne, 6-3, 6-2; Finals: Curry defeated Tilgner, 4-6, 6-3, 6-2.

Women's Open Singles: Semis; ReNee Saunders, Wayne de-

feated Amy Oberle, Norfolk, 6-1, 6-2; Liz O'Brien, Sioux

City, IA defeated Tammy Weberg, Omaha, 6-2, 6-0; Finals: O'Brien defeated Saunders, 6-0, 6-7 (7-9), 7-5.

Mens 35 Singles: Semis; Jim Tiefenbach, Sioux City, IA defeated Mike Hatlee, Sioux City, 6-3, 6-0; Joe Strahm, Pender, defeated Terry Neustrom, 4-6, 6-2, 7-6 (7-2); Finals: Tiefenbach defeated Strahm, 6-3, 6-2.

Mens Open Doubles: Semis; Doug Stanek-John Kentner, Sioux City, IA defeated Kory Kenny-Erik Wolchek, Norfolk-Honolulu, HA, 6-1, 6-0; Jim Johnson-Jim Jorgensen, Fremont-Blair, defeated Troy Cunningham-Shawn Mercer,

Lincoln, 6-2, 7-6 (7-4); Finals: Jorgensen-Johnson defeated Stanek-Kentner, 7-5, 4-6, 6-4.

Mens A Doubles: Semis; Johnson-Jorgensen defeated Monte Tilgner-Kevin Peterson, Wayne, 6-0, 6-0; Tim and Kelly Neustrom, Sioux City, IA, defeated Barry Dahlkoetter-Andy Karavas, Wayne, 6-4, 6-4; Finals: Johnson-Jorgensen defeated Neustrom-Neustrom, 6-1, 6-1.

Mixed Doubles: Semis; Kory Kenny-Jane Koehler, Norfolk, defeated Liz O'Brien-Doug Feagan, 6-7 (5-7), 6-3, 6-3; Mary Otten-John Kentner, Sioux City, IA, defeated Mike Hatlee-Julie Hamilton, Ponca, 6-4, 6-4; Finals: Kenny-Koehler defeated Kentner-Otten, 7-5, 6-2.



THE CHAMPIONSHIP flight winners for the Junior Club Tournament were Jason Claussen and Julia Karlen. Claussen fired an 18-hole total of 85 while Karlen carded a 9-hole total of 56 to take top honors.



THE ANNUAL Junior Club Golf Tournament was held last Thursday at the Wayne Country Club. Pictured left to right are the winners in each flight according to age. At left is Ben Case, winner of the 14-year-old division with a 52. Nate Salmon won the 13-year-old division with a 49. Jeremy Sturm won the 12-year-old division with a 51 and Alex Salmon won the 11-year-old division with a 49. Ryan Sturm won the 10 and under division with a 54.

Father-son golf tourney held

Jim and Guy Welton of Omaha claimed top prize in the Wakefield Lions Club Father-Son Best Ball Golf Tournament held recently at Logan Valley Country Club in Wakefield. There were 74 total entries in the annual event.

The Omaha twosome shot a 66 to win over Larry Buhl and Kelly Hansen from Ponca and Laurel, who also carded a 66 in regulation play, and Kip Bressler and Val Kienast of Wakefield and Wayne who carded a 67.

Winners of the second flight were Pat Casey and Gary Troth of Martinsburg and Allen with a 72. They were followed by Duane and

Jason Strong of Emerson with a 73, and Allen Belt and Frank Schruck of Emerson and Danbury, Iowa with a 73. Myron Olson and Alan Johnson of Wakefield also carded a 73.

Third flight winners included Louie Henschke and Mike Portwood, both of Wakefield with a 73 and Willie and Rod Nixon of Wakefield with a 76. Eldon Nixon and Terry Schlickbernd of

Wakefield and Pender followed with a 77 and Tom and Jim Lake of Pender also followed with a 77.

Fourth flight winners were Mike Kelly and Ken Tonjes of Pender with a 79 and Jack and Kevin Martin of Emerson with a 79. John and

Kurt Lehmkühl of Pender followed with an 80 while Steve and Brian Rundell of Norfolk carded an 82.

Fifth flight winners were Woody and Lance Frey of Pender with an 82, and Larry Miller and Bob Utemark of Emerson with an 84. Erwin and Russ Fuschler of Emerson followed with an 86 as did Bill McTaggart and Brandon Benson of Emerson and Wakefield, with an 86.

The Lions Club awarded trophies to each of the flight winners. The club expressed their appreciation to all the golfers who participated and to everyone who helped make the tournament run smoothly.

WSC scrimmage Saturday

The 1989 Wayne State football team will hold an intrasquad scrimmage on Saturday, August 19, at Memorial Stadium in Norfolk at 6:30 p.m. The scrimmage is the first public scrimmage for the Wild-

cats. It is free and open to the public.

A social gathering will follow the scrimmage at the El Dorado Country Club in Norfolk. Wayne State opens the 1989 football season on

Sept. 2, against the University of South Dakota at Vermillion.

For more information on the scrimmage and the social, please contact the Wayne State Athletic Department.

Kick-off night set

Wayne Carroll will kick-off its 1989-90 school sports campaign with its annual Sports Kick-Off Night on August 22 at 7:30 p.m. It was erroneously written as August 27 in the last issue of the paper.

CERTIFICATE OF DEPOSIT
Available for a limited time only!

SN The State National Bank and Trust Company
WAYNE, NE 48787 • 402/375-1130 • Member FDIC
Main Bank 116 West 1st Street

8 MONTH CERTIFICATE
\$8,000
Minimum Deposit
8.88%

Substantial penalty for early withdrawal.

Bite back with PSAP and now... new PSAP PLUS.



*First 20 sign-ups receive a free stuffed animal.

PSAP — A Great Deal of protection for only \$5.95

For only \$5.95 a month, PSAP covers most PARTS AND LABOR costs to repair the following major appliances:

- Gas Central Home Heating System
- Gas or Electric Water Heater
- Gas or Electric Range
- Gas or Electric Clothes Dryer

Both new and old appliances are covered under the PSAP plan. Imagine, year-round protection against costly repair bills for only \$5.95 a month. That's a great deal.

Bigger the bite — PSAP PLUS

In addition to PSAP, Peoples is proud to offer you the opportunity to bite back even harder. Introducing PSAP PLUS.

For only \$10.95 a month PSAP PLUS covers most PARTS AND LABOR costs to repair this impressive list of major home appliances:

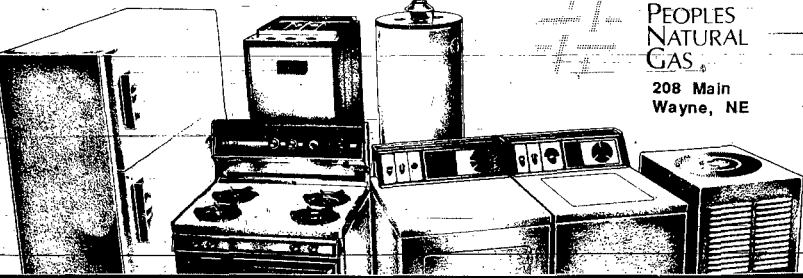
- Gas Central Home Heating System
- Gas or Electric Water Heater
- Gas or Electric Range
- Gas or Electric Clothes Dryer
- Clothes Washer
- Refrigerator
- Central Electric Air Conditioner

Again, both new and old appliances are covered under PSAP PLUS. It's true. You can bite back even harder for only \$10.95 a month.

Stop in and inquire now at

PEOPLES NATURAL GAS

208 Main
Wayne, NE



We Care Where Your Money Goes

At State National Bank, we care where your money goes. That's why we recommend shopping in Wayne. You'll give local businesses a boost and by supporting Wayne, you'll be helping your friends and neighbors in Wayne. Take care of your money. Shop Wayne.

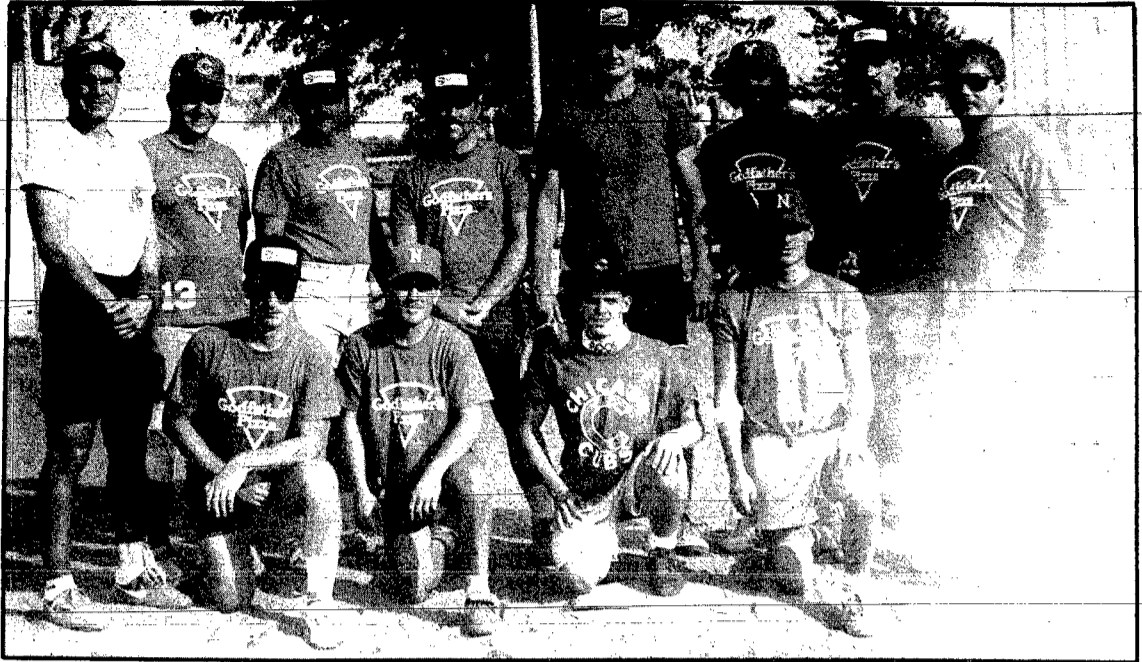


The State National Bank and Trust Company

Wayne, NE 68787 • 402/375-1130 • Member FDIC
Main Bank 116 West 1st • Drive-In Bank 10th & Main

Post season soft-
ball tournament
held Sunday:

Champions: Godfather's in "A" League and KTCH in "B"



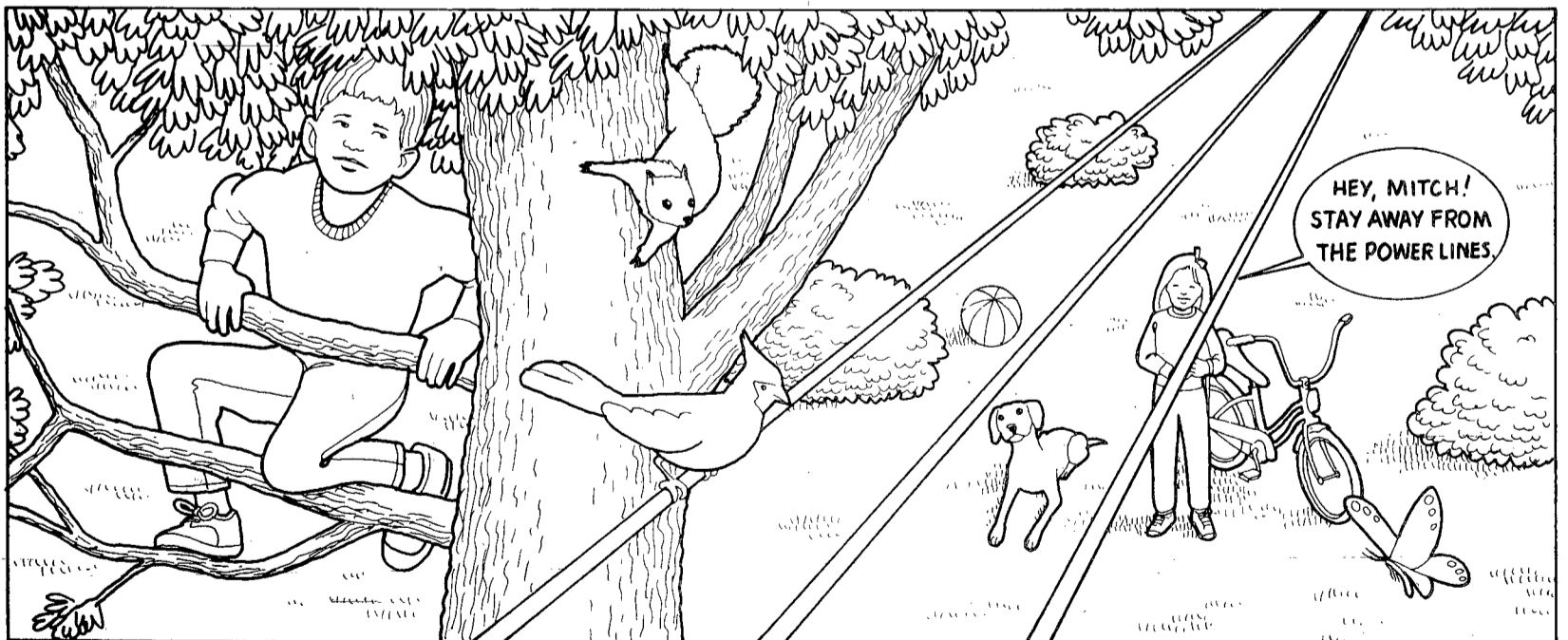
GODFATHER'S-NUTRENA Feeds captured the A League softball post season tournament held Sunday. Godfather's also won the regular season championship with a record of 18-2. Members of the championship team include from back row left to right: Steve Sorensen, Ron Fink, Doug Carroll, Aaron Schuett, Darin Blackburn, Wes Lueth, Al Nissen and Dean Carroll. Front row: Mike Sherer, Jeff Zeiss, Jason Fink and Jess Zeiss. Godfather's defeated Windmill 14-4 in its first game in the tournament and then defeated Sherman's Construction 10-9. In the finals they had to play Sherman's again and Sherman's defeated them 10-8. Since it was a double elimination tournament however, the teams were forced to play again and Godfather's won the finale 9-6.



DUANE SMITH puts just enough spin and arch on the ball to propel KTCH to the championship of the B League post season tournament Sunday in Wayne.



KTCH PROVED to be too much to handle this weekend as they captured the post season B League softball tournament championship. KTCH like Godfather's also won the regular season championship with a 16-4 record. Members of the championship team include from back row left to right: Doug Feagan, Verdel Lutt, Dave Longe, Barry Dahlkoetter, Duane Smith, and Mike Grosz. Front row: Mark Zach, Jeff Berger, Joe Ortmeler, Andy Karavas, Jeff Sperry, Dean Milander, and Todd Volwiler. KTCH downed Lindner's Construction in the first contest 18-5 and then they defeated Ellingson Motors by a 13-3 count. That victory put them in the championship round with an undefeated mark in the double elimination tournament. Ellingson Motors defeated them in the first game of the championship 11-3 but KTCH rebounded to win the finale 14-11.



Help us teach your child not to go over the lines.

Nebraska Public Power District wants your child to be a better artist...and a safer tree climber. To that end, we're holding a coloring contest that teaches youngsters how to be both.

Clip out this entire ad, have your child color it, then mail to: NPPD, Safety Coloring Contest, P.O. Box 499, Columbus, NE 68601.

We'll select five winners from three age groups: 3-5, 6-8 and 9-12. There will be 15 winners in all, each receiving a \$25 savings bond. All entries must be postmarked by August 31, 1989.

So don't wait. Help us start teaching your child not to go over lines—either kind—today.

Name _____

Address _____

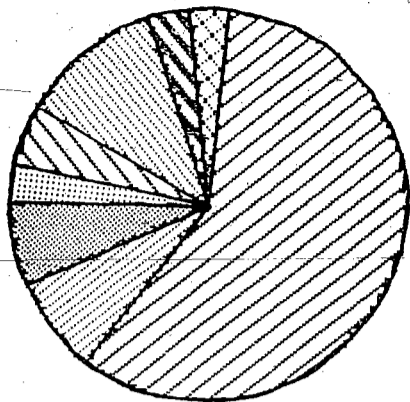
City _____ State _____ Zip _____

Phone (_____) _____

Age _____



Wayne Public Schools District 17



Analysis of Budget Expenditures 1989-90

- 58% Regular Instruction
- 8.65% Special Education
- 6.97% Guidance, Health Service, Pupil Support, Curriculum, In-service, Library
- 2.8% Board of Education, Administrative Services
- 5.91% Principals Office
- 11% Business Support, Operation of Plant, Maintenance
- 2.77% Pupil Transportation, Summer School, Adult Education
- 3.9% Transfers (includes Lunch), Chapter I & II (federal)

Budget

(continued from page 1A)

efficient in establishing pupil-teacher ratios and a full program is available in foreign language, athletics, drama, speech and music," he added.

Local property taxes continue to rise while other areas of school district funding fall, according to a chart drawn up by Haun and presented to the board of education.

In 1984-85, local property taxes was 53.25 percent of the total budget. Tuition comprised 17.75 percent; fines and other lo-

cal receipts, 3.39 percent; state aid, 14.29 percent; other state receipts (including special education) 6.94 percent; federal programs, 4.29 percent; and miscellaneous, .09 percent.

The 1989-90 approved budget shows local property taxes making up 58.46 of the total budget. Tuition is 11.67 percent; fines and other local receipts, 1.20 percent; state aid, 15.79 percent; other state receipts (including special education), 7.89 percent; federal programs, 3.84 percent and miscellaneous, 1.15 percent.

Taxes

(continued from page 1A)

overall budget. Total actual requirements budgeted for in 1989-90 are \$3,702,162, an increase over the previous fiscal year's total budget requirements of \$3,597,897.

General fund requirements alone were up from \$1,013,788 budgeted the previous fiscal year to a proposed \$1,063,907.

Wayne County Clerk Orgretta Morris said there was a "good carryover in the general fund from the previous fiscal year."

"If we didn't need it, we didn't spend it," she said.

This carryover, she said, will help to reduce the property tax askings despite the budget requirement increase.

County road/bridges is proposed to increase in requirements from \$1,154,987 in 1988-89 to \$1,181,677 in 1989-90. Tax askings in this area will also increase from \$592,169.50 to \$617,171.

There is no tax asking or budget requirement in the area of rural road improvement districts, according to the 1989-90 budget proposal. In the previous year approximately \$176,375 was budgeted for rural road improvement, but there was no tax asking. The rural road improvement was a fund

established for construction of Centennial Road east of Wayne.

Proposed property tax askings for the line items of Institutions, Veterans Aid and Noxious Weed all experienced decreases. Institutions decreased from \$6,515.60 in tax askings to \$4,472. The total requirement for this line item has been set at \$11,000 — \$1,000 less than the previous fiscal year's approved budget.

Property tax askings for Noxious Weeds decreased from \$12,536 budgeted in 1988-89 to \$9,138 proposed this fiscal year. Total budgeted requirements for the Noxious Weeds line item increased from \$26,346 in 1988-89 to \$28,250 proposed for 1989-90.

Budget requirements for Veterans Aid stayed the same as the previous year at \$1,350. However, tax askings will decrease as proposed from \$1,194 to \$1,174.

A new line item — Emergency Bridge and Snow Removal Fund — has been created in the county budget, according to Morris. A proposed budget requirement for this new fund is \$28,000. Total property tax requirement on the new fund has been set at \$13,520.

Wayne County Property Transfers

Aug. 15 — Virginia E. and James S. Remick to First United Methodist Church, Lots 10-12, Blk. 3, Crawford and Brown's Addition to Wayne. DS \$136.50.

Aug. 15 — First United Methodist Church to Marion A.

and Patricia M. Arneson, Lots 10-12, Blk. 3, Crawford and Brown's Addition to Wayne. DS \$193.50.

Aug. 15 — Donald H. and Elsie L. Echtenkamp to Mark P. and Linda M. Moser, S 1/2 of NW 1/4 of 12-26-2. DS \$97.50.

Marriage Licences

John J. Kruse, Wayne and Stephanie A. Stephenson, Wayne.

Russell L. Lindsay, Jr., Wayne and Twyla M. Maxon, Wayne.



Photography: LaVon Anderson

Mini tractor puller

WAKEFIELD RESIDENT EVERETT VAN CLEAVE takes his turn during the national sanctioned micro mini tractor and pickup pull held Monday afternoon during the Dixon County Fair in Concord.

RENEWAL TIME

Picture Yourself Back In The Classroom

Consider Enrolling at Wayne State College



Evening Courses Available in Wayne, Norfolk, South Sioux City, And Other Convenient Northeast Nebraska Sites.

1-800-228-9972
CALL FOR MORE INFORMATION
ASK FOR EXTENDED CAMPUS OFFICE

- CONSIDER THIS . . .
- Education is a lifelong activity; it's never too late to begin.
 - The jobs of tomorrow will require higher levels of education.
 - Older students often excel in the college classroom due to their life experience and their strong sense of purpose.
 - Nationally, the non-traditional student (age 25-65) is now the majority student in higher education.

- AND THIS . . .
- Wayne State College is a friendly place that welcomes and supports older students.
 - At Wayne State College, a very large percentage of its students are pursuing a degree while raising a family and working at a job.
 - At Wayne State, you can enroll for a degree or you can take credit courses for enrichment which will count toward a degree if your goals should change.

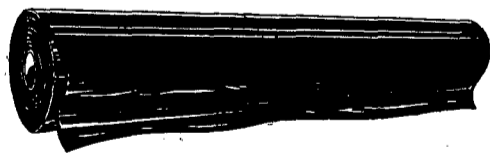
YOU STILL HAVE TIME TO REGISTER FOR FALL CLASSES, WHICH BEGIN ON AUGUST 28. CALL TODAY!

WAYNE STATE COLLEGE

NEBRASKA

"Where Bright Futures Begin"

SALE POLYFILM SILAGE COVERS



ROLL SIZE	THICKNESS	MIL	CLEAR/BLACK	PRICE
20'x100'	6	Black		\$44.19
24'x100'	6	Black		\$52.99
32'x100'	6	Black		\$77.69
40'x100'	6	Black		\$98.59

PRICES GOOD ONLY WHILE STOCK ON HAND LASTS - HURRY!
ALL SALE PRICES CASH & CARRY

Carhart LUMBER CO.

105 Main Street Wayne, NE 375-2110

Winside News

Dianne Jaeger
286-4504

HISTORY BOOK

Members of Winside History Book Committee met Thursday at Ruby Ritze's home. Printing costs and procedures for the book were discussed. Typing and proof reading of histories was done.

Anyone still wanting to get their history included in the book should contact Veryl Jackson 286-4544 immediately.

The committee will meet again today (Thursday) at Ruby's at 8 p.m. to proof read and type. Anyone wanting to help is welcome to attend.

NEIGHBORING CIRCLE

Eight members and two guests of the Neighboring Circle Club traveled to Beemer for lunch and a tour of Marilyn's Tea Room on Thursday. Afterwards they stopped at the Wisner gift and flower shop.

The clubs next meeting will be Thursday, Sept. 14 at Jackie Koll's at 2 p.m.

CHURCH WOMEN

Ann Behmer gave the lesson on Psalm 104 and was also hostess for the Aug. 9 Trinity Lutheran Church Womens meeting. There were nine members, Pastor Peter Jark Swain and two guests present. Irene Meyer, president, presided. The secretary and treasurers reports were given. Thank you's were read from the Allen Frahm family and Frank Lacey. The next meeting will be Wednesday, Sept. 13 with Lila Hansen giving the lesson and Joy Maas and Irene Meyer as hostesses.

BIRTHDAY CLUB

Elsa Burris hosted the Birthday Club Aug. 9 in honor of her birthday which actually was July 4. All 10 members were present and ten point pitch was played. A carry-in luncheon was served.

COTORIE CLUB

Mrs. Ann Behmer hosted the Thursday Cotorie Club with prizes going to her guest, Arlene Rabe and to Twila Kahl, Gladys Gaebler, Dorothy Troutman and Leora Imel. The next meeting will be Thursday, Aug. 24 at Yleen Cowans.

SOCIAL CALENDAR

Thursday, Aug. 17: History Book Committee, Ruby Ritze, 8 p.m.
Friday, Aug. 18: S.O.S. Club, Louise Heithold; G.T. Pinochle Club, Ida Fenske; open AA meeting, Legion Hall, 8 p.m.
Saturday, Aug. 19: Public Library, 9-12 and 1-3 p.m.
Sunday, Aug. 20: American Legion and Auxiliary Family picnic, Winside park, 5:30 p.m.
Monday, Aug. 21: Public Library, 1-5 and 7-9 p.m.; Senior Citizens, Village Auditorium, 2 p.m.; Museum Committee, at Museum, 8 p.m.
Tuesday, Aug. 22: Pageant Committee, Lena Miller's, 7:30 p.m.
Wednesday, Aug. 23: Public Library, 1:30-5:30 p.m.; TOPS, Marian Iversen, 6:30 p.m.
Thursday, Aug. 24: Cotorie, Yleen Cowan's.

Visiting in the Lila Hansen home the last week was her granddaughter, 13 year old Becky Stepanek of Lincoln. This week, her eight year old grandson Zeb Stepanek is staying with her.

James and Betty Jensen returned home Sunday after spending several days at Bushnell visiting in the Harold Shipley home. While there they also visited with his mother Emma Shipley, and the daughter of Harold Shipley, Rita Cummins and her two children of Houston, Tex. Joining also was Harold's sister Etta Donnelly and her daughter Darlene both of California.

Haunted Halloween Happenings

Tour Rates Include:

- Roundtrip air from Omaha
- Deluxe Motorcoach Transportation
- 2 Nts Accommodations
- Admissions & Tours of House of Seven Gables
- Salem Witch Museum
- Witch Trial Trail
- Witch Dungeon Museum

Taxes & Gratuities Subject to Availability

Come go with us

trio travel

100 14th St. 402-275-2670
TOLL FREE 1-800-542-8746

<p>CHECK OUT OUR NEW FAMILY PACK SECTION</p> <p>FAMILY PACK 73% LEAN GROUND BEEF 1-lb. Pkg. \$1.09</p> <p>73% LEAN GROUND BEEF 2-lb. Pkg. \$1.19</p> <p>81% LEAN GROUND BEEF 1-lb. Pkg. \$1.39</p> <p>10-lb. FAMILY PACK 81% LEAN GROUND BEEF \$1.29</p> <p>BOSTON BUTT PORK ROAST 1-lb. \$1.09</p> <p>PORK STEAK 1-lb. \$1.29</p> <p>MAPLE RIVER HALF HAMS 3-4-lb. Avg. \$1.59</p> <p>MINUTE STEAKS 1-lb. \$1.99</p> <p>U.S.D.A. CHOICE SIRLOIN STEAK 1-lb. \$2.99</p> <p>ALASKAN POLLOCK FILLET 1-lb. \$1.49</p>	<p>MAPLE RIVER BACON 1-lb. Pkg. 99¢</p> <p>FARMLAND BACON thick or thin sliced 1-lb. Pkg. \$1.09</p> <p>SHURFRESH SLICED LUNCHMEATS 12-oz. Pkg. \$1.09</p> <p>HORMEL LITTLE SIZZLERS Regular or Hot & Spice 12-oz. Pkg. 79¢</p> <p>GRADE A WHOLE CHICKENS 1-lb. 59¢</p> <p>FAMILY-PACK FRYING CHICKENS 1-lb. 55¢</p> <p>WIMMERS NC WIENERS 2 1/2-lb. Bag \$5.59</p> <p>WIMMERS POLISH SAUSAGE 1-lb. \$2.39</p> <p>WIMMERS BEEF & CHEESE SUMMER SAUSAGE 8-oz. Pkg. \$1.29</p> <p>CIMPL BRAUNSCHWEIGER CHUB 11-oz. Chunk \$5.9¢</p> <p>SHURFRESH CERVELAT 12-oz. Pkg. \$1.49</p> <p>JOHN MORRELL FRANKS 12-oz. Pkg. 59¢</p>
---	---

BILL'S MEMBER OF AFFILIATED COOPERATIVE, INC.

OWNED & OPERATED INDEPENDENTLY BY BUYERS, INC.

STORE HOURS
8 AM-9 PM MON-FRI
8 AM-8 PM SATURDAY
8 AM-6 PM SUNDAY

Prices good Wednesday, August 16 thru Tuesday, August 22
WE RESERVE THE RIGHT TO LIMIT QUANTITIES

SHURFRESH WHITE BREAD 3 1-lb. Loaves **99¢**

OLD HOME BUTTERTOP WHOLE GRAIN BREAD 1 1/2-lb. Loaf **79¢**

OLD HOME SWEET ROLLS 1 Pkg. **79¢**

BLUE BUNNY LITE 85 YOGURT 3 6-oz. Ctns. **99¢**

BLUE BUNNY 100% PURE PINK GRAPEFRUIT JUICE **89¢**

SHURFRESH QUARTERED MARGARINE 3 1-lb. Pkgs. **99¢**

WASHINGTON PEACHES 1-lb. **49¢**

THOMPSON WHITE SEEDLESS GRAPES 1-lb. **69¢**

WASHINGTON BARTLET PEARS 1-lb. **69¢**

**STORE HOURS: 8 a.m.- 9 p.m. Monday-Friday,
8 a.m.-9 p.m. Saturday — 8 a.m.-6 p.m. Sunday**

BARBARA DEE CREME COOKIES 14-oz. Pkg. **99¢**

ROYAL GELATIN Reg. or Sugar Free 4 3-oz. Pkgs. **\$1.00**

PLANTERS TORTILLA CHIPS OR NACHO TORTILLA CHIPS 7-oz. Pkg. **89¢**

SHURFINE PAPER TOWELS Jumbo Roll **49¢**

SMUCKERS GRAPE JELLY 32-oz. Jar **\$1.09**

LAYS POTATO CHIPS 7-oz. Bag **89¢**

HEINZ HAMBURGER SLICED DILL PICKLES 32-oz. Jar **99¢**

CANDY BARS 3 MUSKETEERS - SNICKERS - TWIX - MILKY WAY and M & M'S Pkg. of 6 Bars **\$1.59**

LIBBY'S MIXED FRUIT 16-oz. Can **79¢**

PEPSI & MT. DEW Regular or Diet 2-Liter Bottle **99¢**

SHURFINE EARLY HARVEST PEAS 17-oz. Can **59¢**

BILL'S GW COUPON Without Coupon **30¢** With Coupon **29¢** **TANG** 3 Packs **98¢**

YOUR ONLY HOME OWNED FULL SERVICE STORE

BLUE BUNNY SHERBET 1/2-Gallon **\$1.19**

BLUE BUNNY REVEL CUPS 12 Count Pkg. **\$1.99**

ORE IDA FRENCH FRIES 2-lb. Pkg. **\$1.49**

Bakery ALL CAKE DONUTS Dozen **\$1.59**

Lunchroom STOP IN AND CHECK OUR DAILY SPECIALS MONDAY THRU FRIDAY

Delicatessen

WHITE AMERICAN CHEESE 1-lb. **\$2.39**

WIMMERS SUMMER SAUSAGE STICK 1-lb. **\$2.89**

FARMLAND CHOPPED PORK 1-lb. **\$1.49**

JOHN MORRELL LARGE BOLOGNA 1-lb. **\$1.09**

BROASTED CHICKEN 1-Pt. Potato Salad 1-Pt. Cole Slaw 1-Large Broasted Chicken **\$5.99**

THIS WEEK ONLY DOUBLE COUPONS **49¢**

Wednesday, Sunday, Wednesday, Aug. 16 - 20 - 23
Up to 49¢ Value

MANUFACTURER'S COUPONS ONLY RULES

1. Customer must purchase coupon item in specified size.
2. 49¢ Face Value Coupon Limit.
3. One Coupon per item.
4. All coupons in our ad excluded.
5. Coupons for cigarettes, coffee, or free merchandise excluded.
6. No expired coupons.
7. Double Coupon Value cannot exceed total retail price of item.
8. No partial redemption on coupons exceeding 49¢.